

Single seats

AMF-BRUNS FUTURE**SAFE**[®]

Head and back rest – the patented safety system for wheelchair occupants



www.amfbrunsamerica.com

AMF-BRUNS FutureSafe

Head and back rest – the patented safety system for wheelchair occupants



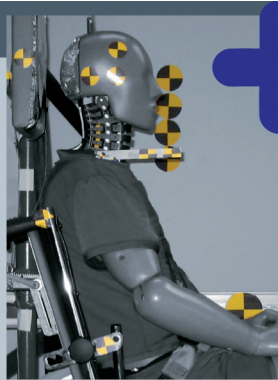
Folded out head and back rest for wheelchair area.



FUTURESAFE® fixed to the floor, swivelled to the side for space-saving.



FUTURESAFE® fixed to the wall, easily adjustable along the tracks.



**Das Plus
an Sicherheit!**

FUTURESAFE® Head and back rest

FutureSafe is a safe, space-saving and comfortable patented safety system, which is flexibly customisable, and comes with an integrated shoulder belt for the wheelchair occupant

PROTEKTOR® Wheelchair and occupant restraint system

The AMF-Bruns Protektor restraint system meets DIN 75078 part II, ISO 10542

PROSAFE® Kraftknoten adapter

With the Kraftknoten system the wheelchair is quickly and precisely fitted to the vehicle's floor. It comes with a pelvis belt for the wheelchair occupant

TECHNICAL DATA

- » Separate head and back rest; can be swivelled by 180°
- » Shoulder belt tested with 20G frontal crash
- » Tested with 10G rear crash complying with EURO-NCAP
- » Easy to swivel
- » Height-adjustable; suitable for all major wheelchair makes

THESE FACTS MAKE ALL THE DIFFERENCE

- » AMF- Bruns FUTURESAFE® is safe and space-saving at the same time.
- » This patented system can be adjusted to your individual needs.
- » AMF- Bruns FUTURESAFE® is tested with 10G rear crash complying with EURO-NCAP.
- » Integrated automatic shoulder belt tested with 20G frontal crash.
- » Easily swivelled manually.
- » AMF- Bruns FUTURESAFE® guarantees maximum safety for all wheelchair occupants.



AMF-Bruns GmbH & Co. KG | Hauptstraße 101 | 26689 Apen
Telefon +49 (0) 44 89 / 72 72 50 | Fax +49 (0) 44 89 / 62 45
hubmatik@amf-bruns.de

www.amf-bruns.de

